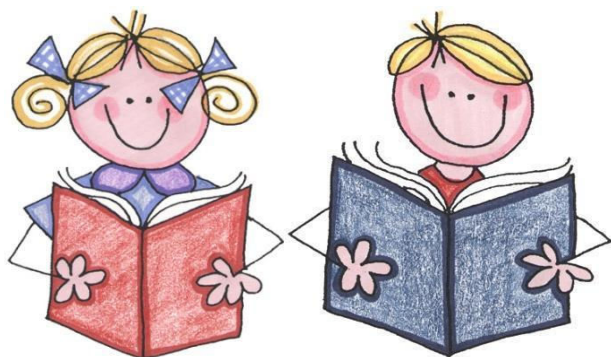


Cycle 1

Evaluation of Learning



2023-2024

*Our Lady of Peace
Elementary School*

3900 Nicole
Laval, Québec
T.450.680.3031
F.450.625.1729
<https://olp.swlsb.ca/>



English Language Arts

Competency	Term 1 20%	Term 2 20%	Term 3 60%
Uses language to communicate and learn (33%)	X	X	X
Reads and listens to spoken, written and media texts (33%)	X	X	X
Produces written and media texts (34%)	X	X	X

Types of Evaluation Tools

- Writing projects
- Rubrics
- Classroom Discussions
- Oral Presentations
- Informal assessments
- Phonics Assessments
- Formal assessments (tests, quizzes)

Mathematics

Competency	Term 1 20%	Term 2 20%	Term 3 60%
Solves a situational problem (20%)	X Only yr. 2	X	X
Uses mathematical reasoning (80%)	X	X	X

Types of Evaluation Tools

- Tests
- Quizzes
- Classwork
- Application Questions
- Situational Problems
- Rubrics
- Teacher Observation

Citoyenneté et Culture Québécoise

Competency	Term 1 20%	Term 2 20%	Term 3 60%
Citoyenneté et Culture Québécoise	X	X	X

Types of Evaluation Tools

- Projects (individual and/or group)
- Classroom Assignments
- Classroom Discussions

French Second Language

Competency	Term 1 20%	Term 2 20%	Term 3 60%
Communicates in French (40%)	X	X	X
Understands oral and written texts in French (40%)	X	NR	X
Produces oral and written texts in French (20%)	NR	X	X

Types of Evaluation Tools

- Rubriques
- Grilles d'observation
- Tests de compréhension
- Contrôles
- Situations d'apprentissage et d'évaluation
- School Board standard test (yr. 2 only)



Éducation physique et à la santé

Competency	Term 1 20%	Term 2 20%	Term 3 60%
Éducation physique et à la santé	X	X	X

Types of Evaluation Tools

- Rubriques
- Observations
- Tests de conditionnement physique
- Portfolios de santé

Drama

Competency	Term 1 20%	Term 2 20%	Term 3 60%
Drama	X	X	X

Types of Evaluation Tools

- Classwork
- Presentations
- Projects
- Discussions
- rubrics

Musique

Competency	Term 1 20%	Term 2 20%	Term 3 60%
Musique	X	X	X

Types of Evaluation Tools

- Rubriques
- Grilles d'observation
- Discussions
- Projets et Présentations
- Travaux de classe
- Tests

Official Communications

First Communication

Prior to October 15th, you will receive the first written communication, which will include comments and observations about your child's learning and behavior.

First Report Card

The first report card will be sent home with your child prior to November 20th. The report card will cover the period from August 31st, 2023 to November 3rd, 2023 and will count for 20% of the student's final mark.

Second Report Card

The second report card will be sent home with your child prior to March 15th. The report card will cover the period from November 6th, 2023 to February 9th, 2024 and will count for 20% of the student's final mark.

Third Report Card

The third report card will be sent home to you prior to July 10th. It will cover the period from February 12^h, 2024 to June 21st, 2024 and will count for 60% of the student's final mark. The final marks for all subjects will be indicated on this report card.

Comments on Learning

For each subject, space is reserved in the report card for the teachers to provide information regarding your child's progress, strengths and challenges.

All Official Communications will be available on the Mozaik Portal. For more information on evaluation, please don't hesitate to contact your child's teacher.



Cross-Curricular Competencies

Cross Curricular Competencies will be evaluated every year in Term 1 and Term 3 according to the following chart:

Cross-Curricular Competency	Term 1	Term 2	Term 3
Exercises Critical Judgment			
Organizes his/her work	X		X
Communicates Effectively			
Works in a team	X		X

This document was designed to communicate the evaluation and reporting practices used by teachers at Our Lady of Peace Elementary School. If you have any questions, please contact your child's teacher(s).

You will notice on the report card that the competency descriptions are only shown for ELA, Math and FSL. This is why we have detailed in which terms each of the competencies will be evaluated.

This document pertains solely to the evaluation and reporting practices at Our Lady of Peace Elementary School.

Reporting Alignment Tables

RATING SCALE for Terms 1 & 2 (Report Card: Progress in the development of the competencies)			
EXCEEDS expectations for the reporting period	A-, A, A+	5-, 5, 5+	85 - 100
CLEARLY SATISFIES expectations for the reporting period	B-, B, B+	4-, 4, 4+	70 - 84
MINIMALLY SATISFIES expectations for the reporting period	C-, C, C+	3-, 3, 3+	60 - 69
IS BELOW the expectations for the reporting period	D-, D, D+	2-, 2, 2+	50 - 59
IS WELL BELOW the expectations for the reporting period	E-, E, E+	1-, 1, 1+	30 - 49
SCALE OF COMPETENCY LEVELS for Term 3 (Attainment of the Competencies: Knowledge and Application)			
ADVANCED competency development	A-, A, A+	5-, 5, 5+	85 - 100
THOROUGH competency development	B-, B, B+	4-, 4, 4+	70 - 84
ACCEPTABLE competency development	C-, C, C+	3-, 3, 3+	60 - 69
PARTIAL competency development	D-, D, D+	2-, 2, 2+	50 - 59
MINIMAL competency development	E-, E, E+	1-, 1, 1+	30 - 49